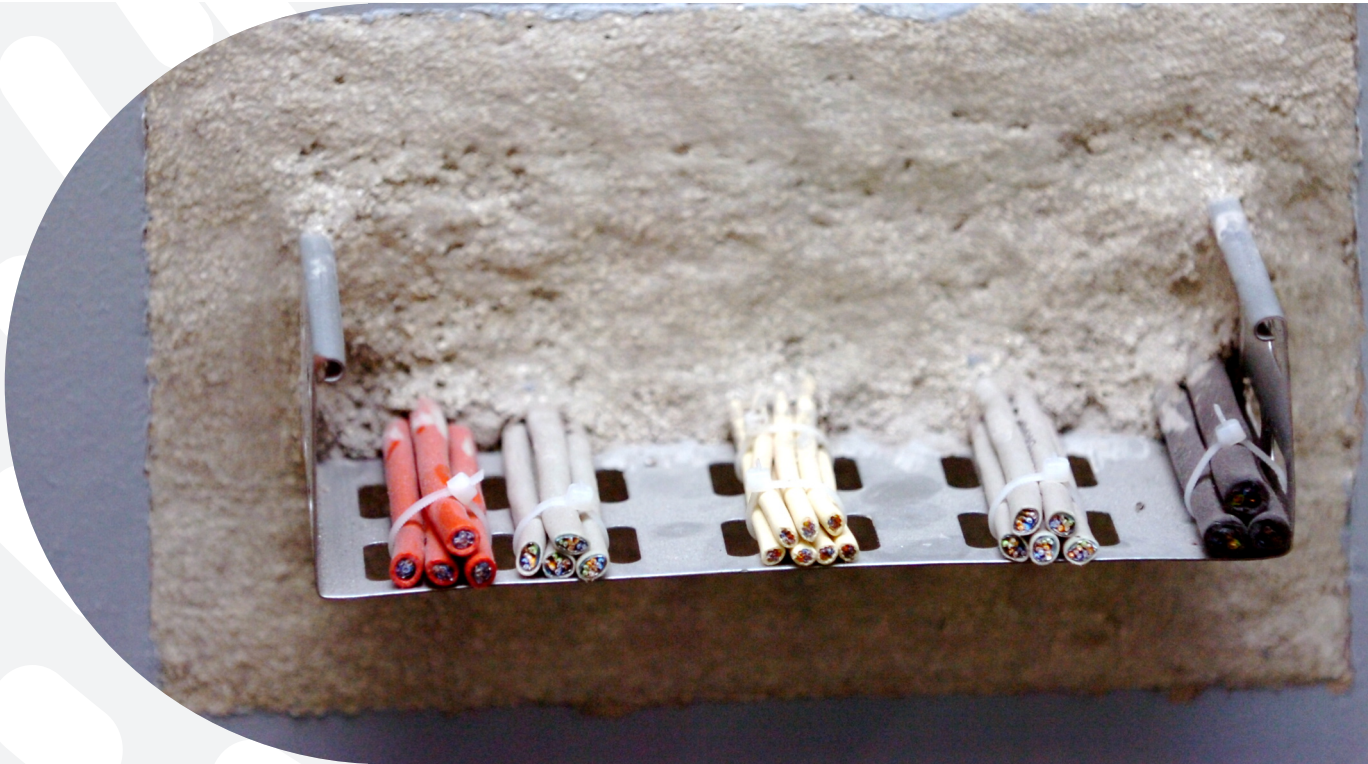




# SolidPART Expanding fireproof mortar EI 120



SolidPART is an expanding fireproof mortar for sealing electrical or mechanical ducts and mechanical penetrations

Available in 25kg bags to fill a volume of approximately 35L

## Benefits

- Expansion of 15-20% at drying
- Easy to apply
- Fast setting time
- Easy to rework through-holes without changing the existing caulking



## Key points

EI 120

→ *Fire resistant*

+15 to 20%  
→ *Expansion on drying*

35L  
→ *25kg bags to fill a volume of 35L*

## Description

SolidPART is an expanding mortar, to be mixed with water

minimum of 2h firewall depending on the configuration

Guaranteed halogen and asbestos free.

Sealing of small to large openings (up to 1200mmx800mm) with multiple penetrations

Wall or slab configurations

Supports : masonry, concrete



## Implementation

- Clean and degrease surfaces
- Moisten the surfaces
- If necessary, build a lightweight casing
- Gradually mix 25kg of mortar in water and mix until desired consistency: thick (10L of water) to fluid (13L of water)
- Pour the mortar into the opening using a mortar pump if necessary
- Smooth out if necessary using a trowel
- Clean tools with water immediately after use
- Allow to dry for 16 hours before removing the casing to avoid detachment from the surface
- Attach the compliance label

## Special features

- Base: cement (powder)
- Colour grey:
- Density: approx. 0,8kg/L
- Packaging: 25kg bags
- Shelf life: 6 months (date of manufacture)
- Thermal conductivity (according to ISO 8302) : 0,22 W/(m.K) at 10°C

## Safety measures

- Refer to the product safety data sheet
- Wear appropriate PPE: safety clothing, gloves & glasses

## Approval and qualifications

- PV EFACTIS 13-A-492-Rev1
- Tested according to the European standard EN 1366-3
- Declaration of performance